

REAL POWER AT REALISTIC WIND SPEEDS



**Average wind speed - 9.21
MPH**

Power produced = 16 kW

Gust Wind Speed - 28 MPH

Power Produced = 448 kW

FTC Energy's Horizontal Turbine System far surpasses any other system using ***realistic*** wind speed data. National Average wind speed over the last 30 plus years is 9.21 MPH

FACT: Average national wind speed is 9.21 MPH. A standard 3-bladed 10,000 watt HAWT, *at best*, is expected to produce a mere 338 watts at 9.21 MPH (4.11 m/s).

***If you buy one, you're actually paying
\$133/watt.***

We have a better solution.

FTC Energy's horizontal turbines turn almost any structure into a power center



Want portable power virtually anywhere?

The revolutionary FTC Energy trailer-mounted systems work. The inside of the trailer can be converted to any purpose. These are rugged, efficient units that go anywhere.

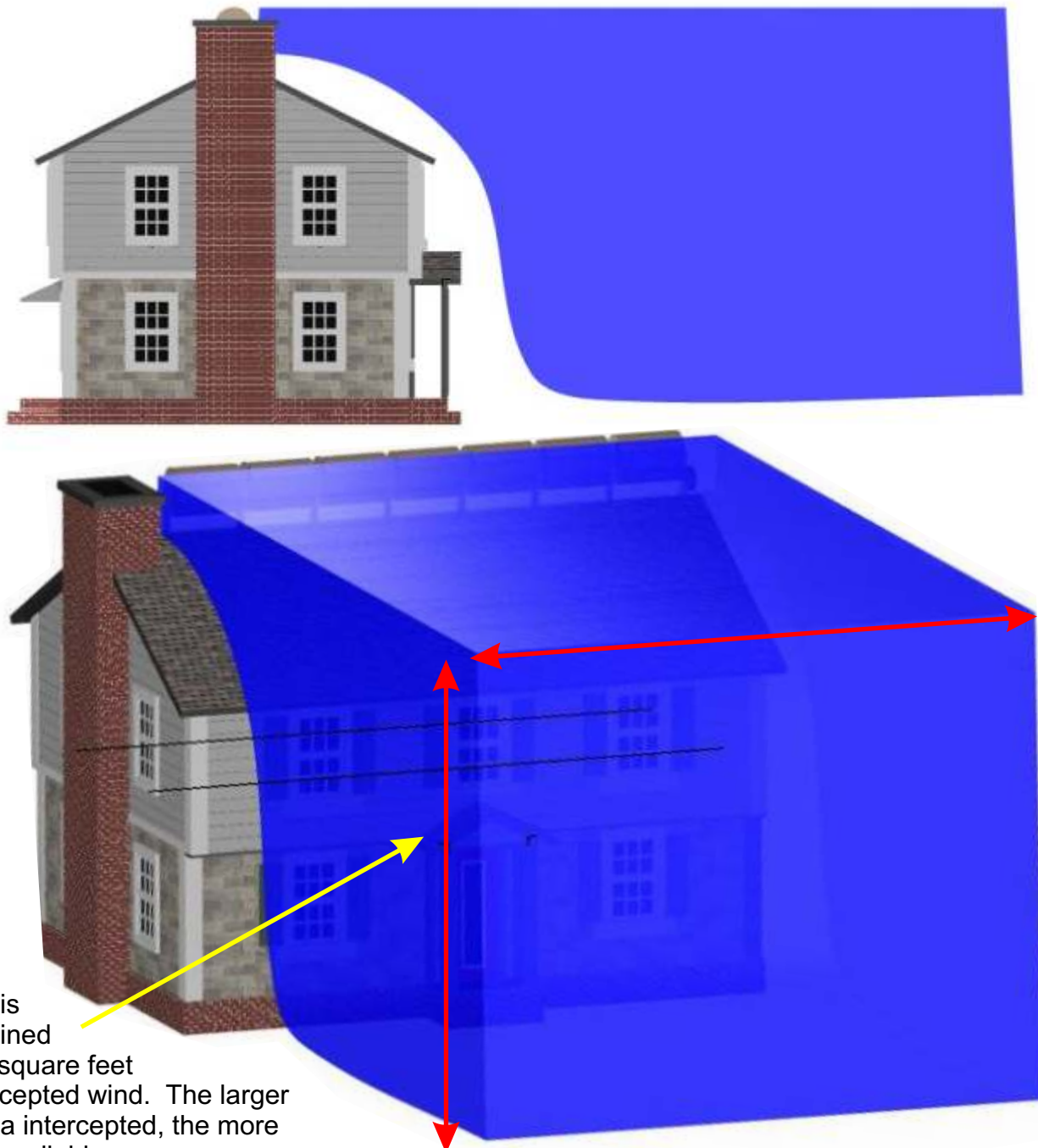
These use FTC Energy's HiAmp Generators

Old house, new house - it doesn't matter. The FTC Energy wind turbines will make any structure a power source. You will make power at realistic wind speeds - not some hypothetical 28 mph that rarely happens.



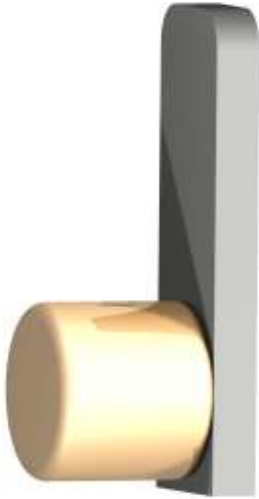
Why FTC Energy turbines make power is easy to understand.

A solid structure blocks wind. Wind has to go over or around the structure. We simply put wind turbines in the path of all this wind energy. What if the wind isn't blowing directly against the turbines? That's the thing we had to solve to make this work. The wind can be as much as 70 degrees off angle and still make power. Front or back - doesn't matter. The turbines have an internal structure that manages the wind flow to give you the power.



Power is determined by the square feet of intercepted wind. The larger the area intercepted, the more power available.

The Components



The Generator Head

You need at least one generator head. This sits at one end of the turbine group. The generator head is sized to meet your needs.

**We Made
Wind Power
Easy!
It's Ala Carte.**

You buy what you need and add more, if needed, later.



Turbine Sections

You buy only the number of low cost turbine sections you need to make power on your structure and with your wind speeds. You can always add more later.

FTC ENERGY, INC.

P.O. Box 730955
Ormond Beach, FL 32173
FTCEnergy.COM
386.575.0088

SALES 714.924.2058